




Rainbow Drums – Set of 5, Ground Fix 23156

manufacturer instructions are included with the product when purchased – these are simply a summary



Contents

Instrument Components: the drums are pre-assembled

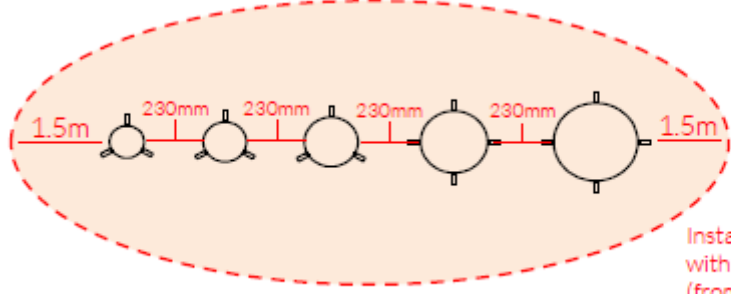
- Ground Fix Components:
-  x34
 -  x34
 -  x17



These drums are intended to be played with the hands and therefore beaters are not included

Before Installation

Choose a suitable location for the Drums, bearing in mind the amount of space required around them. Install the Drums with 1.5m free space (from widest point) around them:



Install Instrument with 1.5m free space (from widest point) around it.

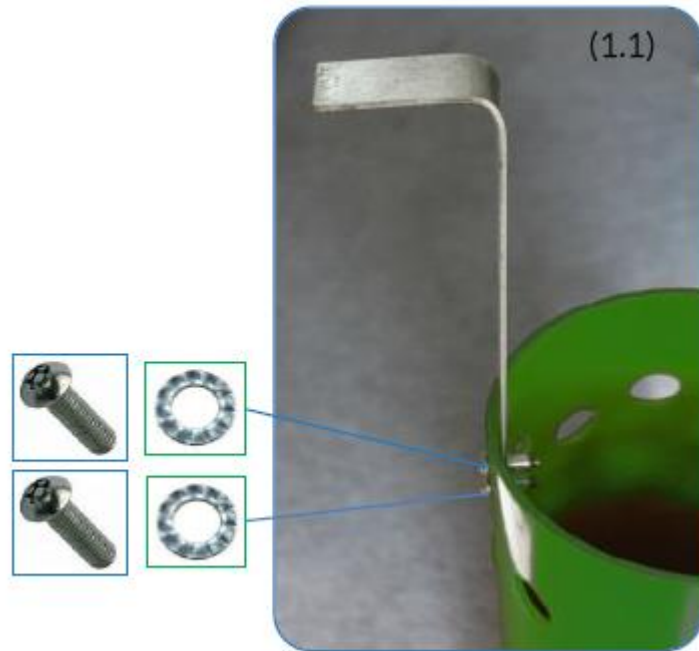
Bear in mind the product weight:

Weight of heaviest part (XL Drum): 14.6kg

Total weight: 44kg

Installation

1. Assemble fixing brackets to base of sambas using M8x25mm security screws and lock washers. (1.1)(See Assembly Guide)

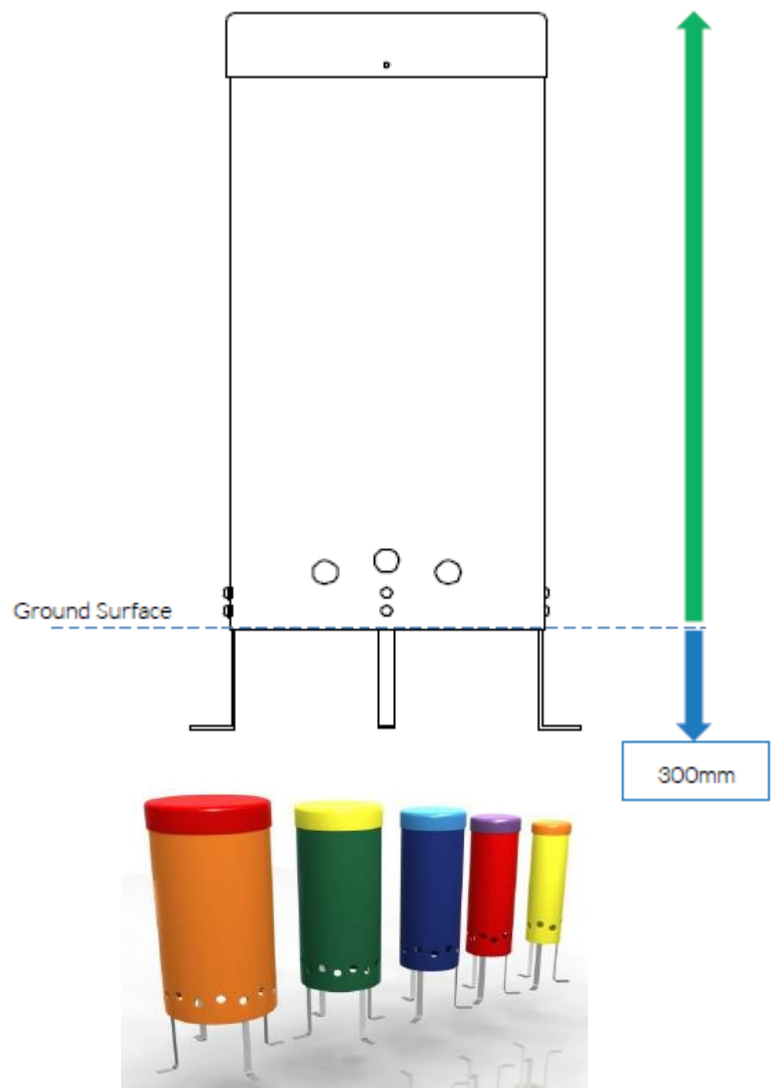


2. Arrange Sambas with minimum spacing between each drum at 230mm and mark holes for excavation. Each hole should be 80-100mm larger than the drum itself.

3. Excavate marked holes to 300mm depth making sure the holes have a level base allow the sambas to sit vertical.

4. Once happy with location of the sambas, fill holes using rapid hardening concrete. Be sure to compact concrete around metal brackets and leave to dry according to manufactures guidelines.


The drums have pre-set heights. The in ground fixing depth is 300mm for all 5 drums



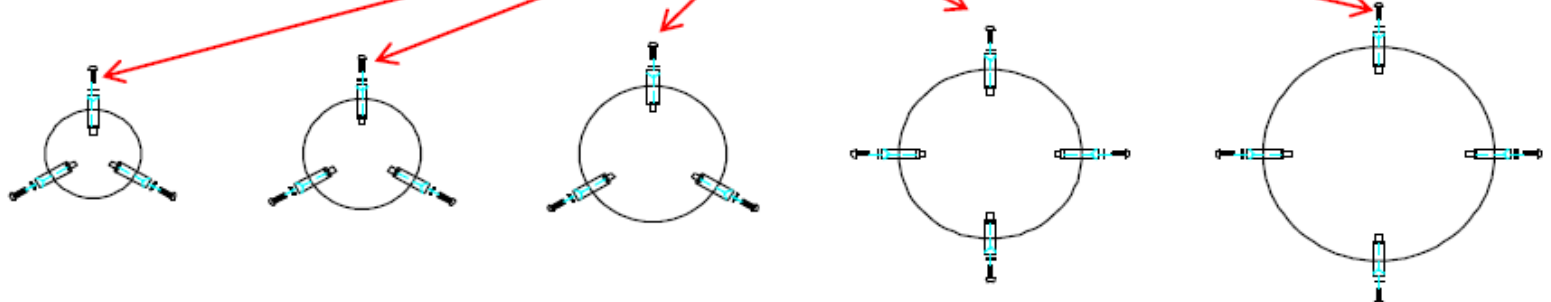
Assembly

Thread Lock Solution
Required (Not Supplied)

Tools:






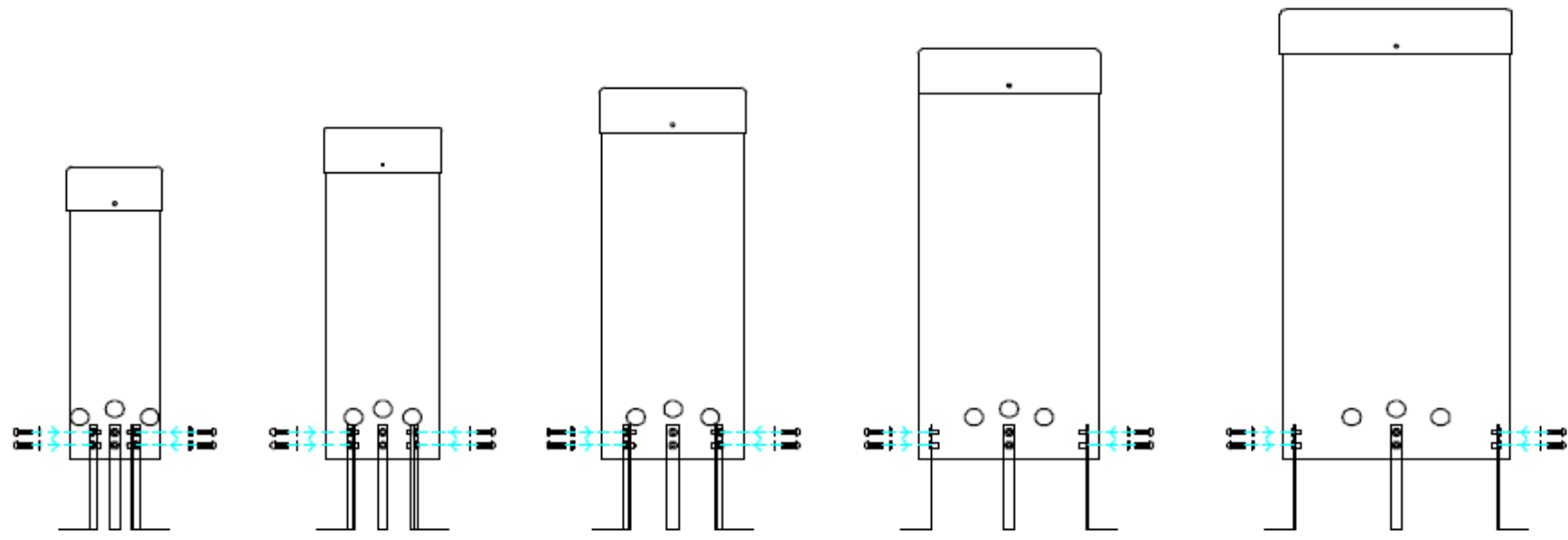
x1
TX 40 Driver Bit



Plan

COMPONENTS LIST:

-  M8x25 Pin torx X34
-  M8 Lock washer X34
-  Ground Fix L Bracket X17




Front

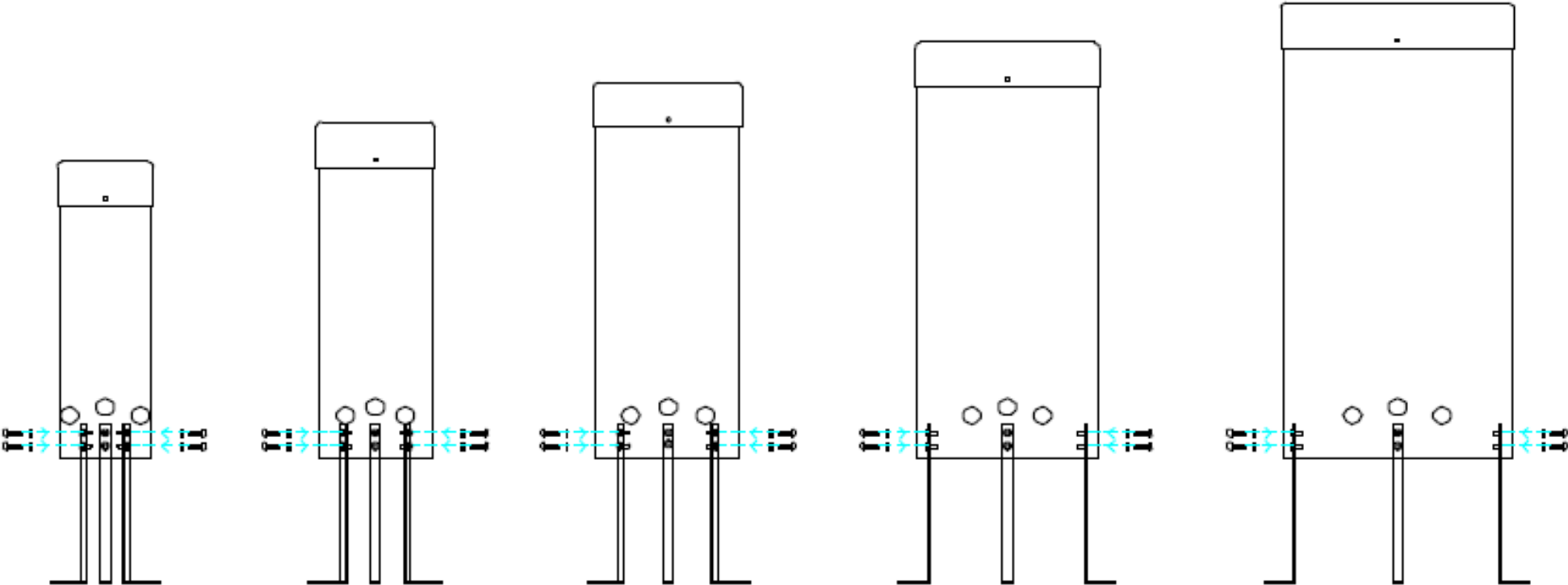
Ground Fix Installation

1. Attach L-Brackets to the base of each drum using the M8x25 Bolts and the lock washers provided.

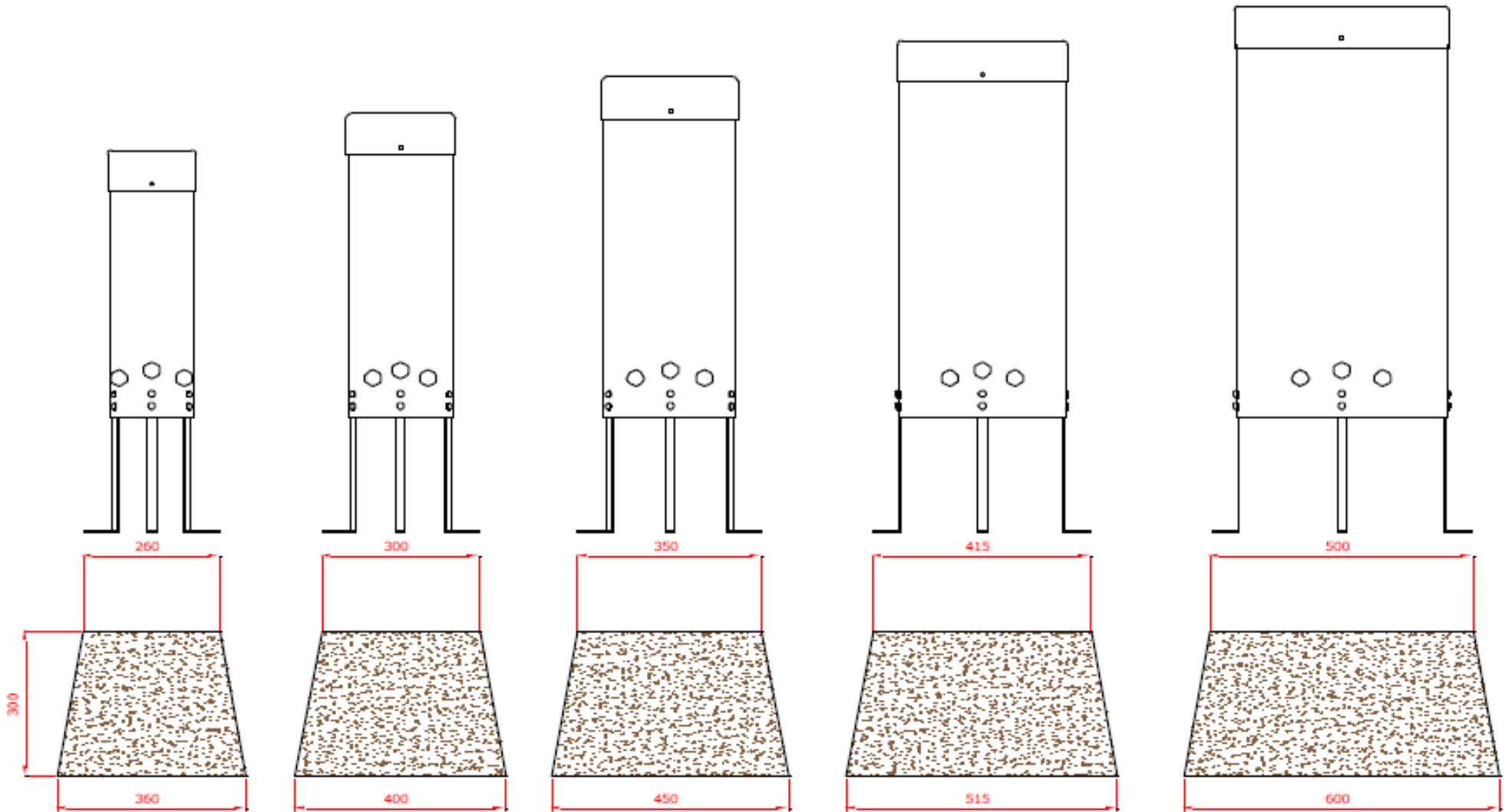
Tools:



x1
TX 40 Driver Bit

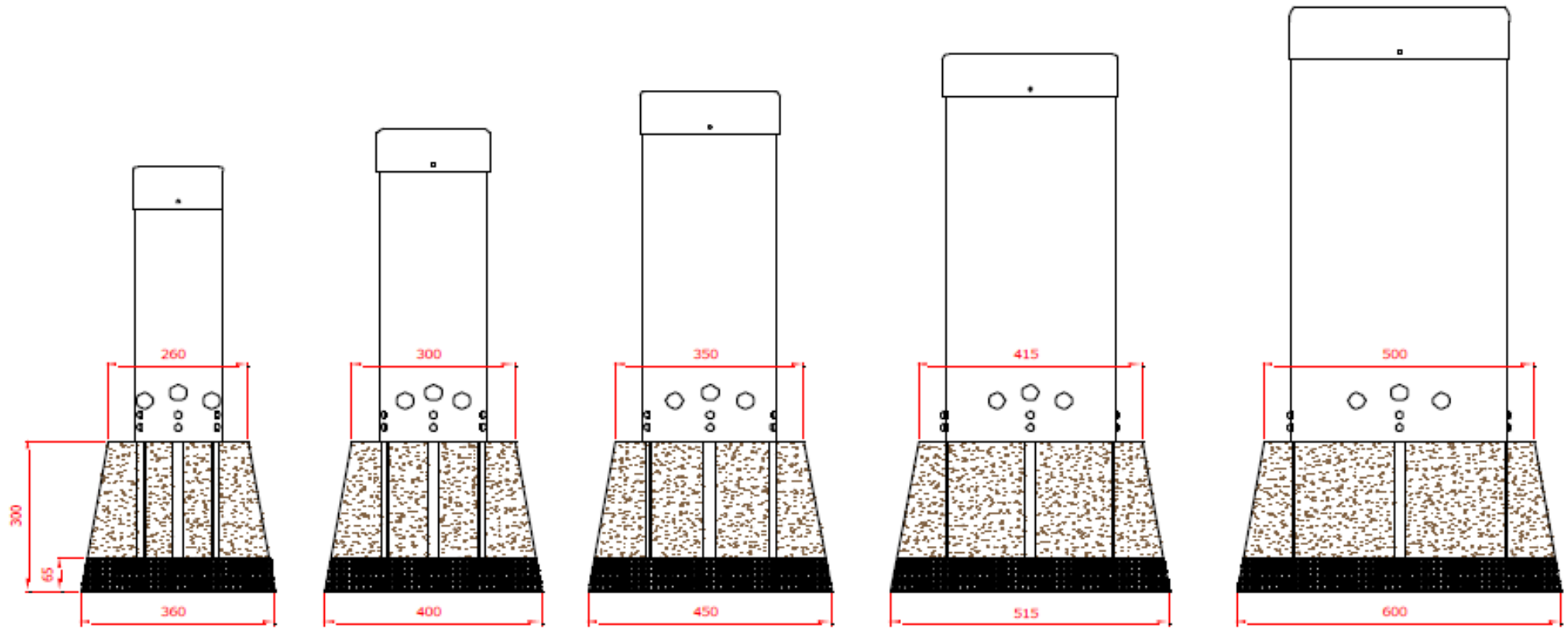


2. Excavate 5 holes 300mm deep that are 100mm larger than each drum. Each hole should taper down making the base diameter at least 100mm larger than the surface hole.

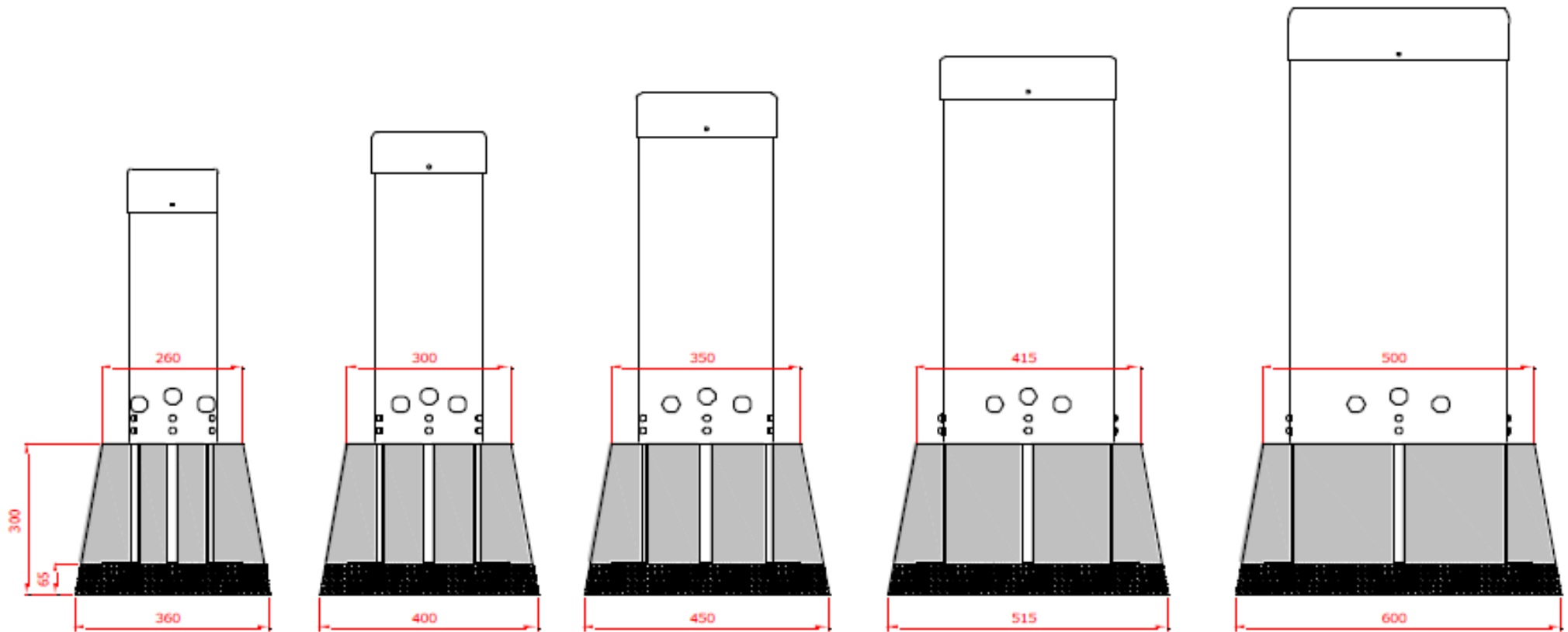


Foundations should not present a hazard. These foundations are recommended as a guide, for more information on foundation details for various surface see Part 7 of BS EN 1176.

3. Compact each hole with a maximum of 65mm of aggregate and lower each drum into its hole.



4. Fill each hole with fast drying concrete to manufacturer's specification.



Care & Maintenance

- Establish a schedule for regularly checking your outdoor musical instrument. Regularly inspect them and maintain them accordingly.
- Failure to adequately care for and maintain your products can affect the warranty.
- Do not alter or modify the product in such a way that the essential safety or sound of the product will be affected. Alterations and modifications may affect the warranty.
- Contact ROMPA® should spare parts or additional beaters be required. Contact ROMPA® should any repair or replacement be necessary.

Plastic

UV stable plastic is extremely low maintenance. Wipe clean with a mild detergent and rinse with clean cold water.

Metal Posts installed below ground level

Check posts to see whether particular conditions (e.g. salt water, electrolytic corrosion) have caused pitting or a weakening of the installed post at ground level. Below is a test procedure that allows you to inspect the posts installed:

Remove surfacing surrounding the post at foundation level to check for anomalies or damage from vandalism. If posts weaken or are subject to vandalism, the unstable post has to be repaired by an expert, or be replaced. Contact ROMPA®.

EN1176 Requirements (applies to Children's Playground Equipment)

All children's playground equipment is subject to regular inspections and maintenance works.

Maintain your outdoor musical instruments according to the instructions supplied with the product to look after the product and to adhere to the warranty requirements.

Excerpt from EN 1176-7:

Section 7 - Inspection schedule

7.1. To avoid accidents, the operator has to make sure that an adequate inspection schedule is developed and adhered to for each playground. In such a schedule, all local conditions and manufacturer's indications that may have an influence on the necessary maintenance frequency, have to be taken into consideration.

The inspection schedule should list all parts, which have to be checked during the different inspections, and the inspection procedures.

7.2. If severe and safety-endangering defects are discovered during an inspection, they should be eliminated immediately. If they cannot be repaired or replaced at once, the respective equipment has to be excluded from use, e.g. by dismantling or closing it down. If an equipment component has to be removed, e.g. for maintenance works, all anchoring or foundations that remain in the ground have to be removed also or be made inaccessible by means of covers. The construction site should then be secured.

As stated in the standards, we recommend a weekly 'Routine Visual Inspection' of your playground. In cases of heavily used or high-risk (e.g. vandalism) playgrounds or if the age of the equipment requires more frequent checks, you may want to increase the frequency of these inspections to daily. An 'Operational Inspection' should be carried out every month and after 12 months at the latest you are required to carry out an 'Annual Inspection' (for best effect this should be completed after the winter months).

Records should be kept alongside these instructions of all actions taken as part of safety management. On the last pages of these maintenance instructions you are offered a Maintenance Record Sheet for the entry of your maintenance report results.

Daily/Weekly Visual Routine Inspection

The routine maintenance of your outdoor musical instruments consists of preventative measures to maintain their level of safety and performance. On a 'Daily/Weekly Visual Routine Inspection' check for visible damage and loose parts:

- Are there any exposed foundations?
- Can you see sharp edges, broken, frayed or missing parts?
- Are components overly worn and torn?

Daily inspection is recommended for heavily-used or high-vandal-risk playgrounds or those that have already been in service for a certain period of time. Deal with all damages and defects as soon as these are found. Record all findings in the Maintenance Record Sheet (below).

Monthly Operational Inspection

As for the Weekly Visual Routine Inspection, the following checks have to be carried out during the Monthly Operational Inspection:

- Are there any exposed foundations?
- Can you see sharp edges, broken, frayed or missing parts?
- Are components overly worn and torn?

The 'Monthly Operational Inspection' requires the following supplementary checks:

- Are all metal parts well connected and not worn down?
- Are all screwed connections and bolted joints tight? If not, please tighten them.
- Are all plastic and or/rubber components satisfactory?

Deal with all damages and defects as soon as these are found. Record all findings in the Maintenance Record Sheet (below).

Annual Inspection

Carry out the 'Annual Inspection' after the winter or at least after 12 months. As well as the checks described above (Daily, Weekly, Monthly), the following checks are required:

- Are all foundations stable and the equipment well anchored?
- Replace joints that show severe corrosions or heavy wear and tear

Deal with all damages and defects as soon as these are found. Record all findings in the Maintenance Record Sheet (below). Copy the sheet or create your own for ongoing maintenance reporting.

| Date of Inspection | Inspection (Daily/ Weekly/ Monthly /Annual) | Name of Inspector | Name of Instrument Inspected | Details of Defect Found | Action Taken | Date Defect Resolved |
|--------------------|---|-------------------|------------------------------|-------------------------|--------------|----------------------|
| | | | | | | |
| | | | | | | |
| | | | | | | |
| | | | | | | |
| | | | | | | |
| | | | | | | |
| | | | | | | |
| | | | | | | |
| | | | | | | |
| | | | | | | |